

W H I T E P A P E R



Hive Storm

STORM Token

hivestorm.io

Abstract

This whitepaper introduces Hive Storm and its STORM token, an ERC-20 token designed to power a next-generation, AI-enabled, quantum-resilient ecosystem. It outlines the problems facing global cybersecurity and financial systems, presents Hive Storm's technology and economic model, and provides a roadmap for adoption across enterprises, financial institutions, and critical national infrastructure. By leveraging artificial intelligence, blockchain transparency, and post-quantum cryptography, Hive Storm establishes a secure, future-proof digital environment for data, transactions, and governance.

STORM is more than a token; it is the foundation of a quantum-ready, AI-protected ecosystem designed to safeguard the future of global finance and cybersecurity.

Hive Storm's mission is long-term: to provide an infrastructure that can withstand the next generation of threats while empowering users through governance, transparency, and interoperability. By combining AI defense, advanced data intelligence, NVIDIA-powered scalability, Ethereum ERC-20 accessibility, and post-quantum encryption, STORM will position Hive Storm as a leader in protecting critical national infrastructure and driving secure digital transformation.

Why Buy STORM Now?

Own the token that powers the network—and rewards you for using it. Pay your Hive Storm fees in STORM to unlock instant discounts, with bigger savings the more you pay in-token. Every month, 30% of STORM used for fees is burned (reducing supply), 40% is paid out to stakers (in USDC/ETH where possible), and 30% fuels product growth—so participation turns into tangible value.

Staking isn't hype; it's tied to real fee share, topped up by a capped incentive pool (max 2% of supply over 24 months, pre-allocated and non-inflationary).

Near-term catalysts are queued up: TGE & staking go live, the official Uniswap pool launches, audit reports publish, the AI Dashboard moves from alpha to beta, first enterprise pilot KPIs drop, and Epoch 1 governance proposals open—giving early holders a voice in fees, burns, and treasury policy from day one.



Executive Summary

Hive Storm is an AI-enabled technology firm at the intersection of cybersecurity, fintech, and quantum-resilient cryptography. Our mission is to deliver a secure, scalable, and globally interoperable ecosystem where data, transactions, and governance can be trusted in real time.

At the center of this ecosystem lies the STORM token, an Ethereum ERC-20 utility token that powers platform access, community governance, transaction settlement, staking rewards, and escrow functionality. More importantly, it is quantum-encryption ready, integrating CRYSTALS-Kyber lattice-based algorithms to ensure resilience against future quantum computing threats, while safeguarding Critical National Infrastructure (CNI), enterprises, and financial institutions through Next Generation Intelligence.

The STORM token will officially launch in September 2025, going live on the Ethereum network. This marks the first step in Hive Storm's mission to create a quantum-secure, AI-powered ecosystem. Token holders will immediately gain access to staking pools and governance preparation, with phased rollouts of AI intelligence dashboards, enterprise integrations, and quantum encryption services to follow.

Risk and Mitigation

No innovation is without risk, and Hive Storm acknowledges this openly. Market volatility, regulatory uncertainty, and technical vulnerabilities all pose challenges. However, by anticipating these risks and embedding mitigation strategies into both technology and governance, Hive Storm ensures resilience. Risk management is not just a defensive measure — it is part of the system's design philosophy, ensuring that Hive Storm can withstand shocks and continue to operate as intended.

Market Risk — Token volatility.

Mitigation: Reserve fund, diversified treasury.

Regulatory Risk — Shifting laws.

Mitigation: FCA alignment, modular compliance strategy.

Technological Risk — Delays or vulnerabilities.

Mitigation: External audits, bug bounty programs.

Adoption Risk — User growth slower than expected.

Mitigation: Strategic partnerships, enterprise onboarding.

By treating risk as a core design input, Hive Storm ensures that it is not derailed by predictable challenges. Instead, it remains adaptable, robust, and capable of fulfilling its mission even in turbulent conditions.

Problem Statement

Despite technological progress, cybersecurity and fintech infrastructures are plagued by systemic weaknesses:

Fragmentation of services — Disconnected vendors and platforms fail to provide unified solutions.

Vulnerability to AI-driven and quantum-era attacks
Traditional defenses (signatures, firewalls, SIEM-only monitoring) are increasingly inadequate.

Quantum threat — Existing encryption standards (RSA, ECC) are vulnerable to Shor's algorithm, which could allow quantum computers to break them in minutes.

Inefficient settlements — Cross-border payments remain slow, expensive, and opaque, particularly in developing economies.

Lack of governance — Users and stakeholders have minimal influence over how systems evolve; centralized intermediaries dominate.

CNI exposure — Energy, healthcare, defense, and transport systems are vulnerable to cyber disruption, which could have catastrophic social and economic impacts.



Industry Background

The digital economy is undergoing exponential transformation. Artificial intelligence (AI), blockchain technology, and cloud services have enabled unprecedented efficiencies in both business and government operations. Yet with these advances come profound new risks.

Cybercrime damages are projected to exceed \$10 trillion annually by 2027, with AI-powered attacks becoming increasingly sophisticated and automated.

Quantum computing is advancing at a pace that threatens to render current encryption methods (RSA, ECC) obsolete. This will impact global finance, communications, and critical infrastructure.

Financial technology (fintech) continues to struggle with inefficiencies in cross-border settlement, fraud detection, and compliance automation.

Key Challenges Facing the Global Digital Economy

Cross-border inefficiencies — Settlements often take several days and involve significant intermediary fees.

Data fragmentation — Security systems are siloed, preventing effective sharing of threat intelligence across industries.

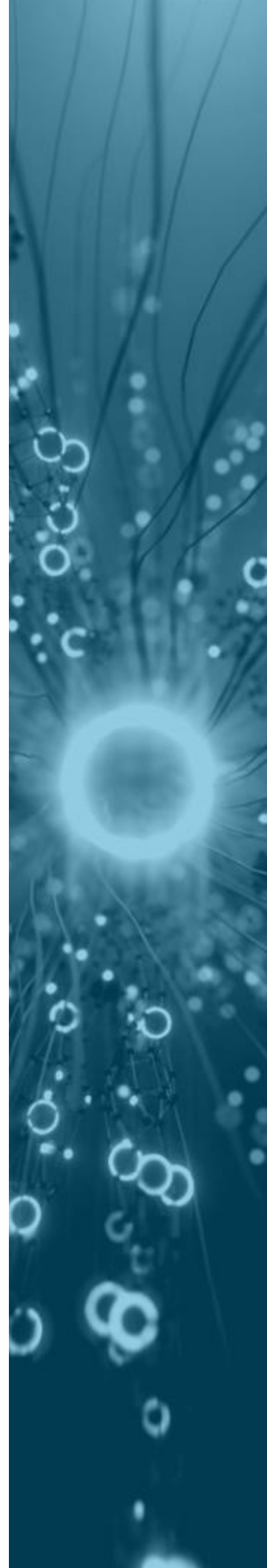
Governance gaps — Centralized entities hold disproportionate control, reducing transparency and trust.

Quantum threat — Without quantum-resistant cryptography, the entire digital economy risks collapse of trust and operability.

Critical National Infrastructure Risks

Critical National Infrastructure (CNI)—including energy, transport, healthcare, and defense networks—is at particular risk. Cyberattacks such as the Colonial Pipeline ransomware attack (2021) demonstrated how a single digital breach can have national-scale consequences.

Hive Storm addresses these challenges head-on, combining AI-powered anomaly detection, Next Generation Intelligence, blockchain transparency, and post-quantum cryptography into a unified ecosystem powered by the STORM token.



Market & Business Strategy

Hive Storm's strategy is laser-focused on the industries most in need of secure, intelligent, and resilient infrastructure. Enterprises face exploding data environments, financial institutions are grappling with compliance and fraud risks, and CNI operators face nation-state adversaries. Hive Storm provides a unifying solution that addresses all three. The business model is designed to monetize these mission-critical services through subscriptions, integrations, and transaction fees, while ensuring that retail users benefit from governance and staking opportunities.

Hive Storm focuses on four core customer segments. For enterprises, we deliver quantum-secure data protection and intelligence-driven anomaly detection to reduce risk and improve incident response. For financial institutions, we provide a unified data-intelligence core that aggregates signals across systems for full-stack visibility, advanced analytics, and quantum-secure settlement workflows. For critical national infrastructure (CNI) operators—including energy, transport, healthcare, and Defense—we offer predictive intelligence that safeguards operations and anticipates failures or attacks before they propagate. Finally, for retail users, STORM enables secure payments, on-chain governance participation, and staking.

Our go-to-market centres on credibility and integration. We partner with leading blockchain ecosystems to reach users where they already build and transact, integrate with enterprise cybersecurity platforms to embed our capabilities into existing workflows, and collaborate with academic programs specializing in post-quantum cryptography to ensure continual rigor and innovation.

Revenue comes from a mix of enterprise subscriptions for the AI and data-intelligence platform, transaction fees across programmable settlement and escrow, and validator/operator incentives that reward network participants who contribute security and performance.

By aligning first with the most security-sensitive industries, Hive Storm builds early traction where the stakes—and proof points—are highest. That institutional credibility compounds into broader adoption, attracting retail participants and opening adjacent markets as the ecosystem—and the STORM token's utility—expands.



AI Defense Core & Next Generation Intelligence

The rise of AI-driven cyberattacks has rendered static defenses obsolete. Hive Storm's AI Defense Core uses NVIDIA GPU acceleration to process petabyte-scale data in real time, ingesting streams from Information Technology (IT), Operational Technology (OT), and Internet of Things (IoT) systems.

Hive Storm's AI defense Core delivers adaptive cybersecurity intelligence capable of detecting evolving attack vectors, insider threats, and even nation-state campaigns. At its foundation lies an advanced data lake architecture that unifies structured, semi-structured, and unstructured data across Information Technology (IT), Operational Technology (OT), and Internet of Things (IoT) environments.

This data is processed through AI-powered pre-processing engines that normalize and filter inputs, reducing noise and significantly improving detection accuracy. Building on this, Hive Storm applies predictive modelling to anticipate cybersecurity events such as intrusion attempts and ransomware campaigns, forecast anomalies in industrial control systems and energy grids, and identify systemic vulnerabilities in Critical National Infrastructure (CNI) before they can be exploited.

The AI Defense Core transforms raw data into predictive intelligence. Enterprises, financial institutions, and CNI operators gain a single pane of glass into their environments, enabling faster, more accurate decisions against modern and future threats.



Quantum Security Layer

Quantum risk isn't hypothetical—"harvest-now, decrypt-later" attacks mean today's traffic and archives could be exposed once practical quantum machines arrive. The public-key schemes behind secure channels and identities (RSA/ECC) are in scope. Hive Storm implements a post-quantum baseline using **CRYSTALS-Kyber** (NIST-standardized lattice KEM) and crypto-agile controls so organizations can migrate without downtime.

Capabilities Post-quantum key establishment + hybrid handshakes

Crypto-agility, policy control, and PKI migration

Central policies define allowed algorithm suites and rollout waves; transitional PKI (classical roots with PQC intermediates or vice versa) preserves chain-of-trust while new certificates are issued.

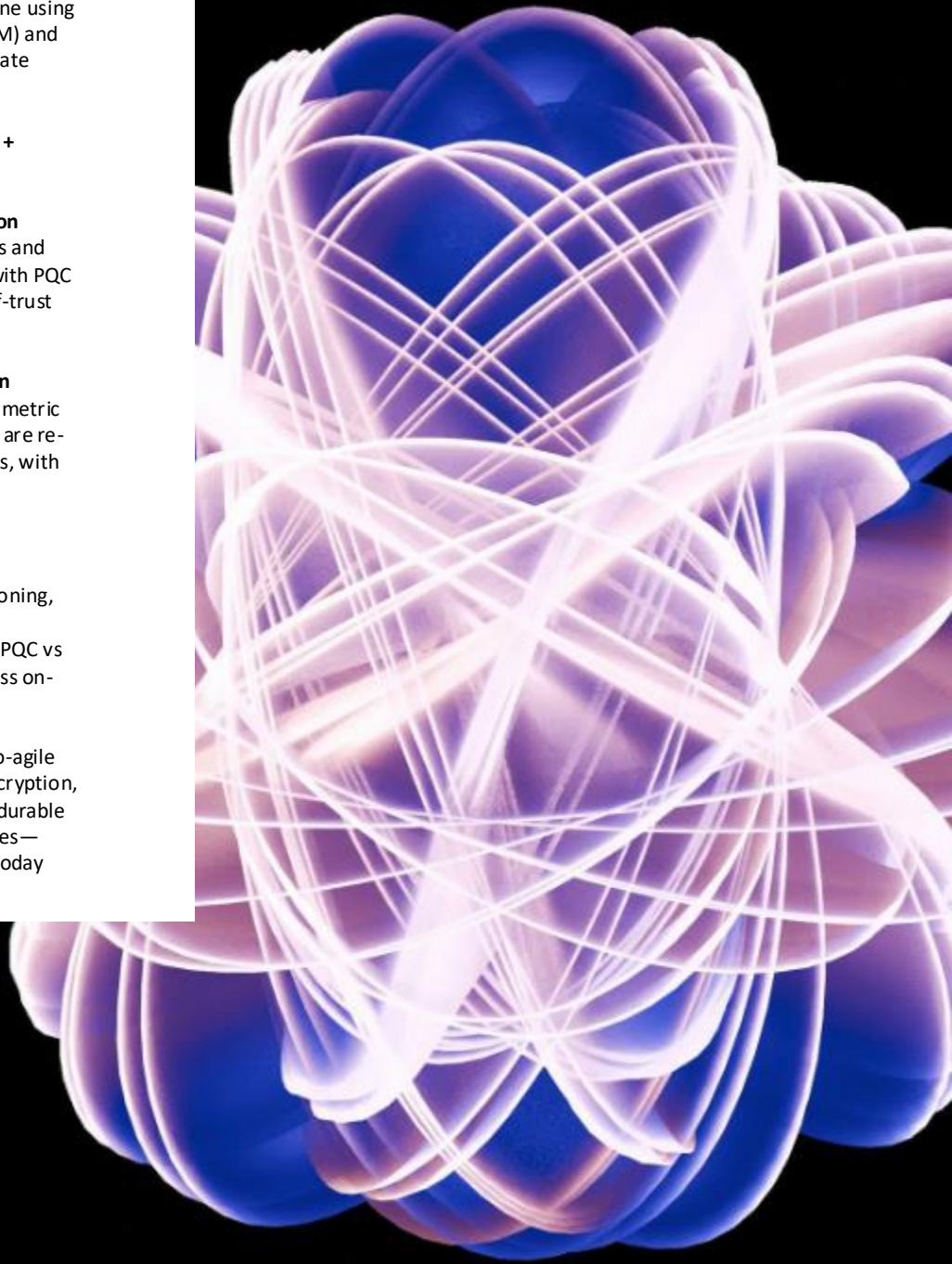
End-to-end data protection & HNDL mitigation

PQC establishes/wraps keys while modern symmetric ciphers handle bulk encryption; archival stores are re-wrapped/re-encrypted under PQC-derived keys, with inventories and attestations proving what was migrated and when.

OT/IoT and performance readiness

Profiles for constrained devices (offline provisioning, staged firmware updates) plus vectorized implementations and adaptive selection (pure PQC vs hybrid) meet latency/throughput budgets across on-prem, cloud, and hybrid estates.

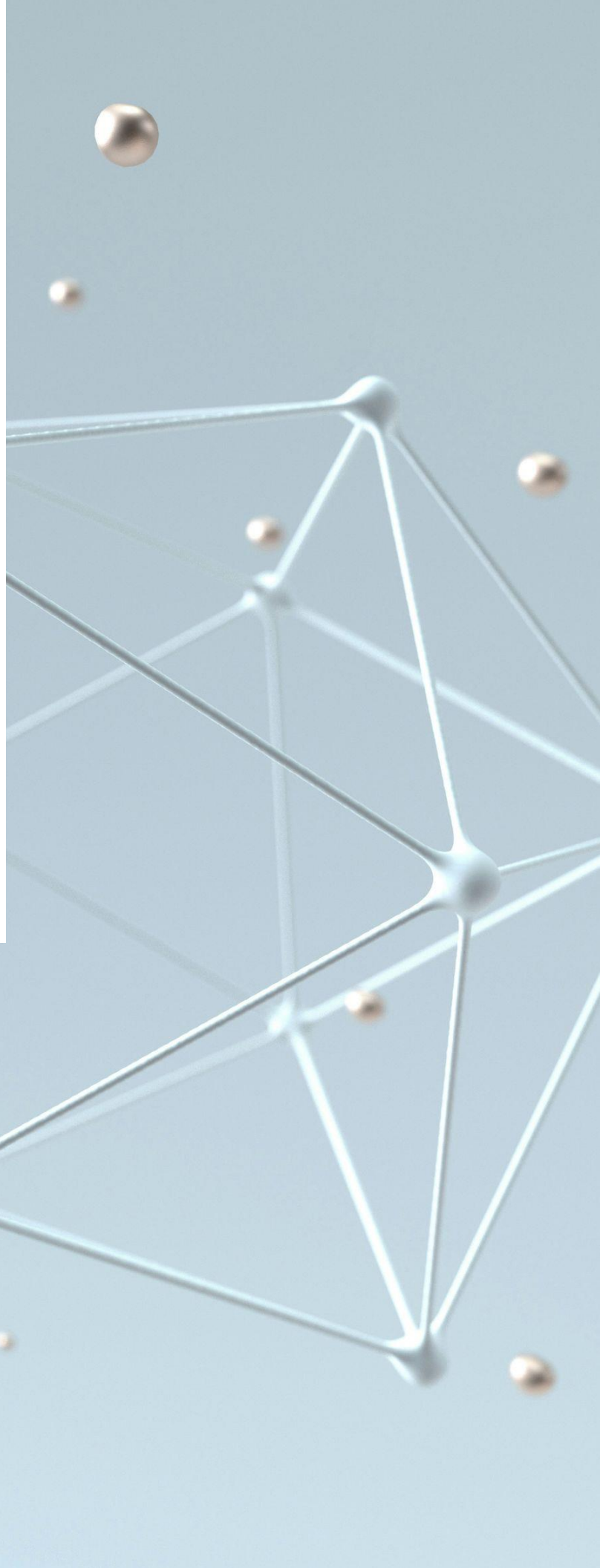
By pairing Kyber-based handshakes with crypto-agile policy, PKI migration, and verifiable data re-encryption, Hive Storm's Quantum Security Layer delivers durable protection against quantum-enabled adversaries—keeping communications and archives secure today and for decades to come.



Token Utility

For any digital ecosystem to thrive, the utility token must be more than a speculative asset - it must provide concrete, recurring value to its holders and users. STORM is designed to sit at the center of Hive Storm's ecosystem, functioning as both a transactional currency and a governance tool, while also acting as the gateway to advanced cybersecurity and intelligence services. Its role is deliberately broad, ensuring that it is equally relevant to enterprises integrating Hive Storm solutions, financial institutions that require secure settlement and compliance-ready analytics, and individual users who participate in governance or staking. By weaving utility into the daily operation of the ecosystem, STORM becomes indispensable rather than optional.

By combining operational roles with governance and settlement, STORM ensures that every stakeholder is engaged and invested in Hive Storm's long-term success. Its design transforms it from a simple token into the connective tissue that links users, enterprises, and institutions to the infrastructure they depend on. In this way, STORM underpins a thriving and sustainable digital economy within Hive Storm's ecosystem.



Storm Tokenomics

A token's economic design determines whether it can achieve adoption, stability, and long-term value appreciation. Many digital assets fail not because of technology, but because of poorly designed economics. Hive Storm's tokenomics are carefully structured to distribute tokens fairly, incentivize participation, and build scarcity over time. By locking advisor and team allocations into vesting schedules, aligning community rewards with adoption, and introducing a burn mechanism tied to real usage, STORM balances near-term accessibility with long-term sustainability. This design ensures that value accrues not just to early adopters, but also to enterprises and institutions that commit to the ecosystem as it matures.

Token Structure

Standard – Ethereum ERC-20

The STORM token is issued as an ERC-20 asset on the Ethereum mainnet, leveraging the most widely adopted and battle-tested token standard in the industry. This ensures:

- Interoperability with the entire Ethereum ecosystem, including wallets (MetaMask, Ledger, Gnosis Safe), exchanges, and DeFi protocols.
- Security and reliability through well-audited smart-contract patterns.
- Composability, allowing developers to integrate STORM into decentralized applications, staking pools, and cross-chain bridges with minimal friction.

Total Supply

1,000,000,000 STORM (fixed, no inflation)

The token supply is capped permanently at one billion units, enforced by the smart contract at deployment.

- No minting functions are retained, guaranteeing that the circulating supply cannot be increased beyond the initial cap.
- A fixed supply creates predictable scarcity, allowing market forces to determine value without risk of hidden inflation.
- Transparent issuance ensures that every token holder can independently verify the total supply on-chain.

Allocation

Public Sale: 30%

Team & Advisors: 15% (vested, 3 years)

Strategic Partners: 10%

Community Rewards: 20%

Reserve Fund: 25%

This tokenomics model creates a self-reinforcing cycle of growth. As Hive Storm services are adopted, usage generates token velocity, which in turn drives burn events and increases scarcity. Simultaneously, the treasury ensures reinvestment into security audits, ecosystem development, and partnerships that drive further adoption. This balance makes STORM a reliable foundation for both speculative investors and long-term ecosystem participants.

Token & Treasury

STORM: 0x59c69Bfd72e9fBBC6ebF575c54FFcbC0f04A2155

Treasury 0x9EB92774995b7F65b0d0e559FC84cD3a9F3bA06a

Storm Club

The Storm Club is Hive Storm's premier membership program—rewarding those who support the ecosystem while offering real-world experiences that reflect the brand's adventurous spirit.

The Club brings together early supporters, strategic partners, and passionate community members who help drive Hive Storm's growth. Members become ambassadors and stewards, shaping governance decisions and sharing in the network's success.

Membership & Access

Token-Gated Entry – Membership requires a verified holding or staking threshold of STORM tokens.

Contribution Path – Community achievements (development, governance, ecosystem promotion) can qualify individuals for invitation even without large token holdings.

Member Benefits

Early Access

Priority participation in new protocol features, beta products, and enterprise pilots.

Exclusive Drops & Rewards – Limited-edition NFTs, merchandise, or staking bonuses available only to club members.

Networking & Events

Private forums, quarterly briefings, and in-person meetups with Hive Storm leadership, enterprise partners, and fellow members.

Intelligence & Research – Advanced analytics and market insights before public release.

Read more on our website: <http://hivestorm.io>



Compliance & Regulatory Position

No ecosystem can thrive without trust, and in regulated markets trust is inseparable from compliance. From its inception, Hive Storm has been architected with regulatory frameworks at the core—not as an afterthought. Rather than attempting to retrofit controls for KYC (Know-Your-Customer), AML (Anti-Money Laundering), or token classification, these safeguards are embedded directly into token issuance, enterprise onboarding, and network operations.

Proactive, Built-In Controls

Integrated KYC/AML – Identity verification and AML screening are part of every primary token sale, enterprise integration, and regulated-market transaction.

Automated Compliance Workflows – Smart-contract logic enforces jurisdictional restrictions, transfer limits, and reporting requirements where applicable.

Dynamic Policy Updates – Compliance modules can be upgraded to reflect evolving regulatory guidance without disrupting the token economy.

Regulatory Alignment by Region

United Kingdom (UK) – Token economics and issuance processes are structured for FCA-compliant utility token classification, avoiding features that might trigger e-money or security status.

United States (US) – Governance, distribution, and functionality are designed to avoid security-token classification under SEC standards, drawing on established guidance such as the Howey Test and FinCEN virtual asset rulings.

European Union (EU) – Ongoing monitoring and integration of the MiCA (Markets in Crypto-Assets) framework ensure conformity as the regulation rolls out across member states.

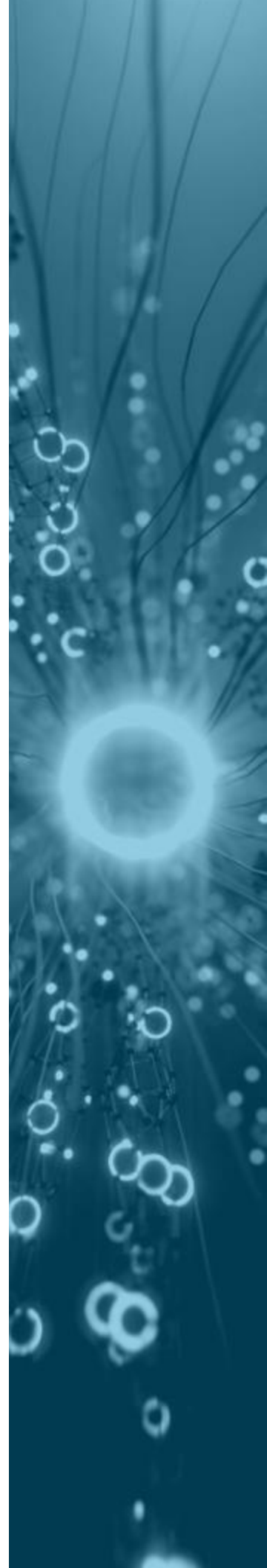
Global Monitoring – Continuous review of guidance from MAS (Singapore), APAC, and other key jurisdictions allows for rapid adaptation as new markets evolve.

Strategic Advantages

Enterprise Confidence – Institutions can integrate Hive Storm without creating unexpected compliance liabilities, unlocking participation from banks, asset managers, and corporates.

Resilience to Regulatory Shocks – Early alignment with major frameworks protects the network against sudden policy changes and market disruptions.

Retail and Institutional Inclusivity – By embedding compliance at the protocol level, Hive Storm can serve both individual participants and the most demanding institutional clients without compromising decentralization..



Governance Model

Governance is the backbone of any decentralized ecosystem, ensuring that decision-making remains transparent, inclusive, and resistant to capture. Hive Storm is designed around these principles, embedding the STORM token at the heart of both governance and utility to create a self-sustaining, community-driven network.

Key Capabilities

On-chain governance – All major protocol changes, network upgrades, and treasury allocations are decided through token-based voting. STORM holders can propose initiatives and vote directly on-chain, creating an auditable and tamper-resistant decision process.

Access control – STORM serves as the gateway to premium platform features, advanced analytics, and enterprise-grade integrations. Holding or staking tokens grants tiered access, aligning network usage with token demand.

Staking and rewards – Participants can stake STORM to help secure the network and validate governance outcomes. Stakers earn rewards for their contribution, creating a virtuous cycle of participation and security.

Aligned incentives – Enterprises, institutions, and community members are all economically motivated to act in the network's best interest. Token economics are structured so that network growth directly benefits those who help govern and support the ecosystem.

Why It Matters

This governance and utility layer ensures that Hive Storm remains:

Community-driven – Power is distributed among token holders rather than a central authority.

Transparent – Every proposal, vote, and treasury action is permanently recorded on the blockchain.

Economically aligned – Token mechanics encourage long-term engagement and discourage extractive behavior.

Sustainable – Incentives for participation, staking, and decision-making help prevent centralization and create resilience over time.

By merging governance and utility in a single token, Hive Storm establishes a framework where users, enterprises, and institutions can confidently collaborate, knowing the network's evolution is guided by open participation and shared economic interest.



Legal Disclaimer

Nature of the STORM Token

STORM is a utility token designed to provide access to the Hive Storm ecosystem, including governance, staking, community rewards, and platform features.

STORM is not intended to constitute securities, investment contracts, shares, or any other regulated financial instrument in any jurisdiction.

Nothing in this document constitutes an offer to sell, or a solicitation of an offer to buy, STORM or any other financial instruments.

No Investment Advice

This white paper is provided for informational purposes only and does not constitute legal, financial, tax, or investment advice.

Potential purchasers should conduct their own due diligence and consult professional advisers before participating in any token sale or secondary market trading.

Jurisdictional Restrictions

Participation in the STORM token sale may be restricted or prohibited in certain jurisdictions, including but not limited to:

The United States of America and its territories,
Canada,
People's Republic of China,
United Kingdom (where retail financial promotion rules apply),

Any country or region subject to UN, US, EU, or UK sanctions.

It is the responsibility of each participant to ensure compliance with all applicable laws and regulations in their country of residence.

Regulatory Uncertainty

Blockchain technology and digital assets are subject to evolving regulatory frameworks.

Future legislation, rulemaking, or regulatory guidance could negatively impact the STORM token, its utility, or its value, including restrictions on use, transfer, or exchange listings.

Technology Risks

Participation in blockchain-based systems involves inherent risks, including but not limited to:

Smart contract vulnerabilities, software bugs, or exploits,
Network congestion or failures,
Loss of private keys or access credentials,
Cybersecurity attacks on wallets, exchanges, or the Hive Storm platform.

Market & Volatility Risks

The value of STORM may fluctuate significantly and is subject to market forces beyond the control of the Hive Storm team.

There is no guarantee of future value or market liquidity, and purchasers should be prepared to lose all or part of the funds used to acquire STORM.

No Guarantees of Performance

Hive Storm makes no warranties or representations regarding the future performance of the STORM token, the development of the ecosystem, or the achievement of any roadmap milestones.